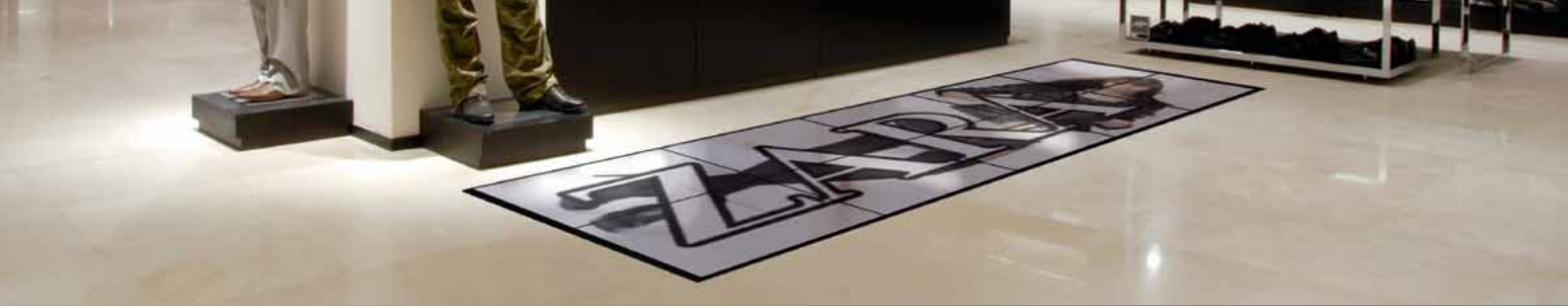


# ZIRKON

FUNDAMENTAL  
ENTERTAINMENT



# Zirkon

## The Floor-Panel for the right Mix of Entertainment

The LEDCON video floor offers almost unlimited possibilities in the design of attractive flooring for events as well as for fixed installations. Zirkon is the specialist for the short-term use on exhibitions, car shows, fashion shows or TV shows. The Zirkon video floor is equipped with a sophisticated and precise mounting system that allows large LED floor surfaces to be installed very quickly.

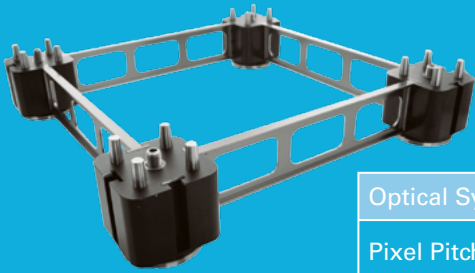
Zirkon is supplied with smoked security glass for extreme contrast, brilliant color reproduction and a high load capacity the LED floor can be used in any environment.

## Features

- ⇒ Extremely durable up to 2 t / m<sup>2</sup>
- ⇒ Wide viewing angle
- ⇒ Easy handling and leveling
- ⇒ High resolution
- ⇒ Scratch resistant
- ⇒ Resistant and rugged
- ⇒ Maintenance from top
- ⇒ Sensor technology for content management
- ⇒ Interactive



## Details



	Zirkon 7	Zirkon 9	Zirkon 18
Optical System			
Pixel Pitch	7.5 mm	9.3 mm	18.75 mm
LED Type	SMD Blackbody LED	SMD Blackbody LED	SMD Blackbody LED
Resolution	80 x 80	64 x 64	32 x 32
Brightness	800 cd/m <sup>2</sup>	800 cd/m <sup>2</sup>	800 cd/m <sup>2</sup>
Color Depth	16 bit	16 bit	16 bit
Module Dimensions			
Dimensions	600 x 600 mm	600 x 600 mm	600 x 600 mm
Weight per Module	19,2 kg	19,2 kg	19,2 kg
LED Display			
IP Rating	IP65 IP54 rear	IP65 IP54 rear	IP65 IP54 rear
Power Consumption max./m <sup>2</sup>	660 W	660 W	660 W
Power Consumption $\phi$ /m <sup>2</sup>	225 W	225 W	225 W
Viewing Angle min.	160°	160°	160°
Horizontal Viewing Angle	160°	160°	160°
Refresh Rate	> 2000 Hz	> 2000 Hz	> 6000 Hz
Carrying Capacity	≥ 500 kg/Panel	≥ 500 kg/Panel	≥ 500 kg/Panel
Controlling	MVS	MVS	MVS



# LED display made by LEDCON



Customer-focused project management, uncompromising quality of products, as well as overall professional service entitle LEDCON systems to one of the leading producers of LED systems.

In recent years a powerful set of enterprises from development to sales has grown on the 3500 m<sup>2</sup> company site. This cooperation ensures an extraordinary flexibility thus enabling even highly customized solutions.

You plan an Out-Of-Home-Display, a Digital-Signage-Screen or an information banner at your point of sale - we manage any environment and purpose of messages via LED systems precisely shaped to your individual concepts and needs. A globally spread network of providers sets LEDCON into a position to select the best suited components for any imaginable LED display project and precisely shape according to your imaginations.

LEDCON accompanies your project from its first ideas to setting it into operation. No time-consuming coordination of scattered branches for you - one of our skilled and

experienced project managers guides you along throughout the project as your single, personal addressee.

Our support concept comprises assistance in visualisation matters, CAD based design, calculation, matters of statics, sketches of details and of course in the final installation and setting into operation.

If required we additionally support you in matters of administrative permission or composition of relevant project data.



## LEDCON Systems GmbH

Jacksonring 12  
D-48429 Rheine

Phone +49 (0) 5971 - 800 52 - 0  
Fax +49 (0) 5971 - 800 52 - 66

[www.ledcon.de](http://www.ledcon.de)  
[info@ledcon.de](mailto:info@ledcon.de)