



# L-SI

VERSATILE  
**show talent**



# For that extra bit of information and entertainment!

The perfect solution for events in enclosed rooms

The L - SI display is suitable for all temporary indoor applications and is available with different pixel pitches. The classic is ideal for the use in the touring area, at trade shows or corporate events.

The good image quality and the precise construction of the module are perfect for entertainment and events in indoor venues.



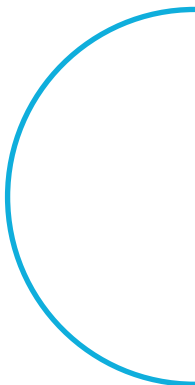
L - 7 SI display 5.2 x 2.9 m | 9 x 5 module, 7.2 mm pixel pitch

L - 9 SI display 4.6 x 3.4 m | 8 x 6 module, 9 mm pixel pitch



## Brilliant Flexible Perfect

Experience new dimensions



## Details

Available pixel pitch:



	L - 6 SI	L - 7 SI	L - 9 SI
Optical system			
Pixel pitch	6.0 mm	7.2 mm	9 mm
Pixel type	SMD 3 in 1 blackface	SMD 3 in 1 blackface	SMD 3 in 1 blackface
Resolution	96 x 96	80 x 80	64 x 64
Brightness	2.000 NIT	1.400 NIT	1.200 NIT
Module dimensions			
Weight per module	8.2 kg	8.2 kg	8.2 kg
Module size	576 x 576 mm	576 x 576 mm	576 x 576 mm
LED display			
Power consumption	type: 120 W max.: 300 W	type: 120 W max.: 300 W	type: 120 W max.: 300 W
Number of pixel	9.216 px	6.400 px	4.096 px
Contrast ration	400 : 1	500 : 1	800 : 1



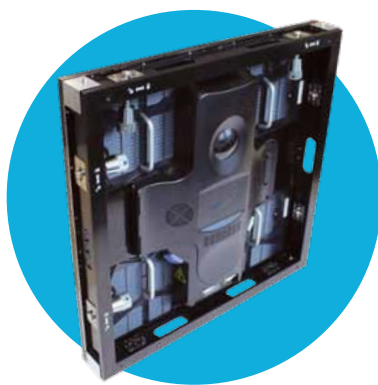
# Build up in a matter of seconds!

The LEDCON L - SI series captivates by a smarter rigging system

## Features

- Easy one-person-handling for setup and tear down
- Easy quick-lock-system: Tool-free assembly, undetachable parts
- LCD display with operating hour counter
- Rear service door for comfortable maintenance, modular design
- Laser cut aluminum edges for a precise alignment of the modules: Pixel gap < 0.1 mm
- Wiring with high quality Neutrik powerCON – and etherCON-plug connector
- High quality and homogeneous front optic by patented click shader masks
- Blackface LEDs

Fast — uncomplicated — unlimited





## Touring accessories

Every display size can be assembled easily with the single bar quicklock system without using different rigging bar length. The LED modules are going to be connected with the hanging bar via quick lock mechanism.

The statically approved connector system is rated for a total weight of up to 12 interconnected LED modules.

The L - SI modules will be delivered in practical 8x or 10x flight cases directly.



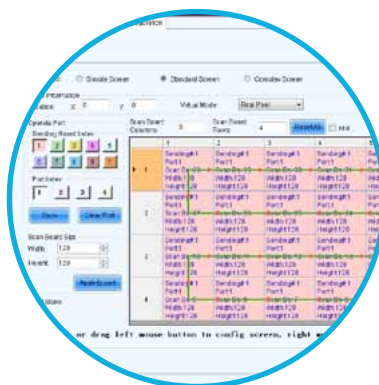
# LEDCON LED controlling

The L – SI LED display is also smart in configuration and controlling. The single addressing and configuring of each LED modules is not necessary. The intelligent LEDCON controller automatically assigns the modules to their respective positions. Simply arrange the LED modules in the Configuration Wizard via drag & drop, select cable routing, send data, done!

If needed, multiple displays can be assembled to creative special forms.

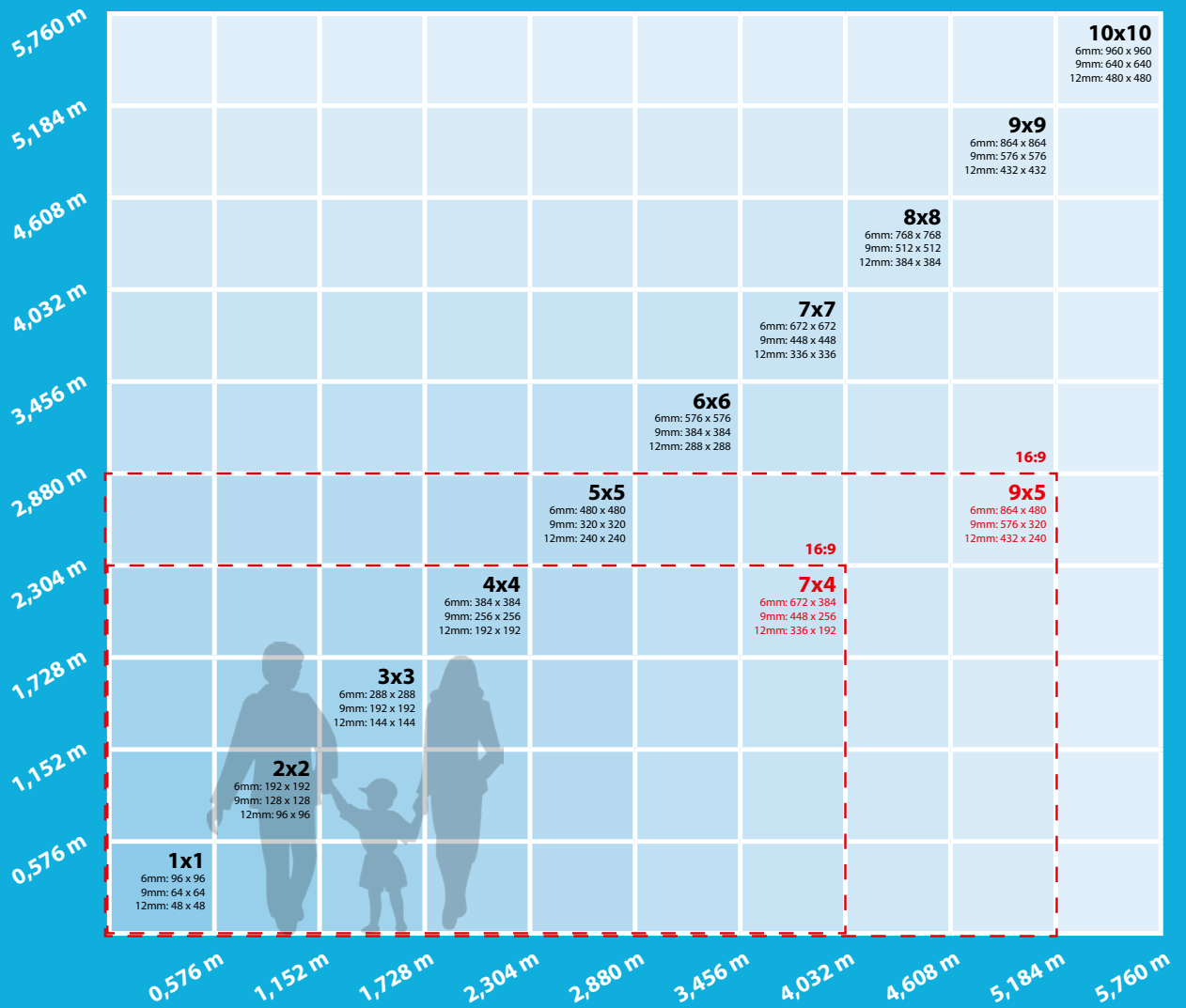
## Easy configuration

- Input signal: DVI-D, up to 1.920 x 1.200 pixel, 2.560 x 960 pixel or 2.048 x 1.152 pixel
- Up to 2 independent signal outputs
- Signal transmission via CAT cable
- Fully redundant System Backup Technology: optional two sided supply of signal data through two independent LED controller
- Easy wiring: Daisy-chain-signal chain, no splitter needed
- Easy debugging: Status LED on every LED module rear side for power and signal, test button
- Extensive controller-software: Configuration-assistant | Brightness control PWM frequency and color depth adjustment | LED calibration | Power-safe-function



# Maximum flexibility

Every display size can be assembled easily. Use our comfortable screen configurator to see possible sizes and pixel resolutions:



# LED display made by LEDCON



Customer-focused project management, uncompromising quality of products, as well as overall professional service entitle LEDCON systems to one of the leading producers of LED systems.

In recent years a powerful set of enterprises from development to sales has grown on the 3500 m<sup>2</sup> company site. This cooperation ensures an extraordinary flexibility thus enabling even highly customized solutions.

You plan an Out-Of-Home-Display, a Digital-Signage-Screen or an information banner at your point of sale - we manage any environment and purpose of messages via LED systems precisely shaped to your individual concepts and needs. A globally spread network of providers sets LEDCON into a position to select the best suited components for any imaginable LED display project and precisely shape according to your imaginations.

LEDCON accompanies your project from its first ideas to setting it into operation. No time-consuming coordination of scattered branches for you - one of our skilled and

experienced project managers guides you along throughout the project as your single, personal addressee.

Our support concept comprises assistance in visualisation matters, CAD based design, calculation, matters of statics, sketches of details and of course in the final installation and setting into operation.

If required we additionally support you in matters of administrative permission or composition of relevant project data.



## LEDCON Systems GmbH

Jacksonring 12  
D-48429 Rheine

Phone +49 (0) 5971 - 800 52 - 0  
Fax +49 (0) 5971 - 800 52 - 66

[www.ledcon.de](http://www.ledcon.de)  
[info@ledcon.de](mailto:info@ledcon.de)

