



DELTA 5 TOURING

Outdoor specialist



High-class entertainment!

Uncompromising quality combined with excellent easy servicing

The Delta-Series is especially designed for the requirements of temporary outdoor applications. Waterproof surface sealing of the LEDs and the IP65 power and signal connector on the back let the DELTA LED-display persist even in bad weather conditions.

The displays are equipped with a sophisticated quick lock system – perfect for the event industry: Align the display, turn the quick-lock pin, ready. The horizontal connectors allow a curvature from -30° up to $+30^{\circ}$.

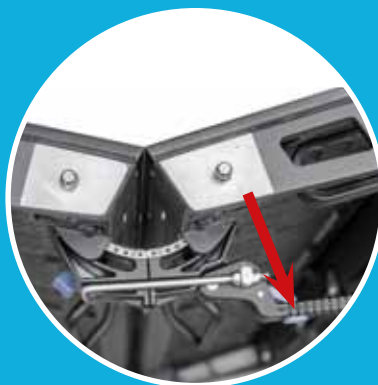


During installation not tools are required – whether horizontal or vertical construction.



Neutrik connection

For lock and unlock just press the blue buttons press the lever.



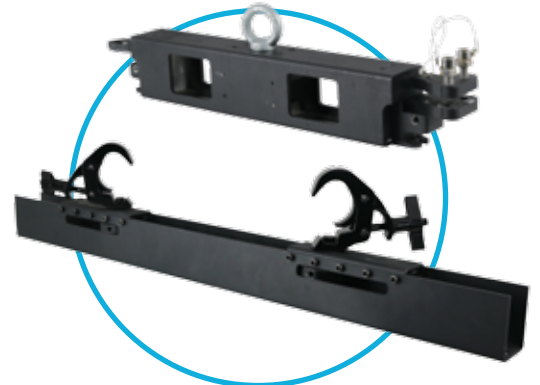


DELTA 5

overview

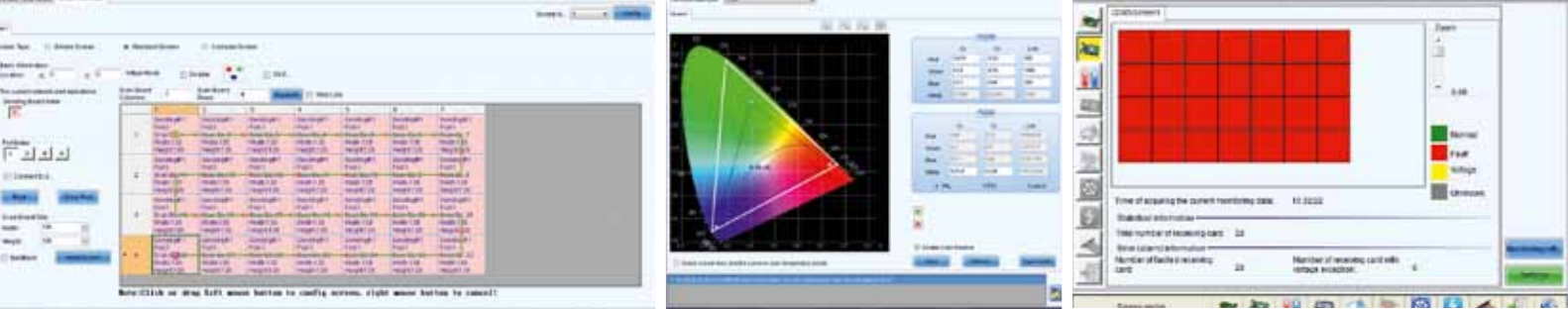
Features

- High contrast, SMD 2727 blackbody LED
- Fan less convection cooling design
- +/- 30° curved
- Front service
- Quick-lock-system
- Easy one-person-handling for setup and tear down, only 8.2 kg or 14 kg per module
- Rear service door for comfortable maintenance, modular setup
- Precise housing for exact alignment: Pixel gap < 0.1 mm
- Wiring with high quality Neutrik powerCONTRUe1 – and etherCON-plug connector



Details

	DELTA 5 500/500	DELTA 5 500/1000	DELTA 8 500/1000
Optical system			
Pixel pitch	5.9 mm	5.9 mm	8.9 mm
LED type	SMD 2727 Blackbody LED	SMD 2727 Blackbody LED	SMD 2727 Blackbody LED
Resolution	84 x 84	84 x 168	56 x 112
Brightness	5000 cd/m ²	5000 cd/m ²	5000 cd/m ²
Color depth	16 bit	16 bit	16 bit
Module dimensions			
Dimensions	500 x 500 mm	500 x 1000 mm	500 x 1000 mm
Weight per module	8,2 kg	14,0 kg	14,0 kg
LED display			
IP rating	IP65	IP65	IP65
Power consumption max./m ²	600 W	600 W	600 W
Power consumption ϕ /m ²	300 W	300 W	300 W
Min. viewing distance	6 m	6 m	9 m
Horizontal viewing angle	120°	120°	120°
Vertical viewing angle	120°	120°	120°
Refresh rate	> 3800 Hz	> 3800 Hz	> 3800 Hz
Controlling	NOVA	NOVA	NOVA



Comfortable construction

The DELTA LED display is also smart in configuration and controlling. The single addressing and configuring of each LED module is not necessary. The intelligent LEDCON controller automatically assigns the modules to their respective positions. Simply arrange the LED modules in the Configuration Wizard via drag & drop, select cable routing, send data, done!

The signal path is also simply done: The DVI video cable of the player is simply plugged into the "DV IN" socket of the controller. Via software and USB port the LEDCON controller is notified once which screen position has to be displayed on the LED display. Via the "OUT" – RJ45 port the video files are transferred to the individual LED modules via CAT-line. If necessary, the maximum cable length of 100 m for CAT cable can be extended also through interconnected fiber converters up to 1.5 km signal path.

In addition, a time- and sensor controlled automatic brightness control is integrated to have the LED display perfectly integrated to the ambient brightness.

LEDCON controller

NovaStar MCTRL 660 controller

The standard LED controller - ideal for rental and large fixed installations | Pixel capacity: 2.3 million pixels | Input resolution: 1920 x 1200, 2048 x 1152, horizontal and vertical resolution is freely customisable max. 2560 x 960 or 1536 x 1536 | Video interface: DVI-I and HDMI In (configurable as backup), DVI-I and HDMI out (control monitor and / or second controller) | Management interface: USB 2.0 (type B) | LED screen outputs: 4x CAT (RJ45) Freely configurable output (backup) | For more details please visit www.ledcon.de

NovaStar VX4S

Controller and scaler in one device | Pixel capacity: 2.3 million pixels | Input resolution: 1920 x 1200, 2048 x 1152, horizontal and vertical angle resolution are freely customisable max. 2560 x 960 or 1536 x 1536 | Video inputs: DisplayPort, HDMI, SDI, 2x VGA, 2x composite | Video outputs: DVI Loop, SDI Loop, DVI-I and VGA monitor out (control monitor and / or second controller) | Management Interface: Ethernet (RJ45) and USB 2.0 (type B) | For more details please visit www.ledcon.de

NovaStar NovaPro HD controller

Controller and scaler in broadcast quality | Pixel capacity: 2.3 million pixels | Input resolution: 1920 x 1200, 2048 x 1152, horizontal and vertical angle resolution are freely customisable max. 2560 x 960 or 1536 x 1536 | Video inputs: 3G SDI, DVI-I, HDMI, VGA, DisplayPort and composite | Video outputs: DVI Loop, SDI Loop, DVI-I and HDMI Monitor out for control monitor and / or second controller | Management Interface: Ethernet (etherCON) and USB 2.0 (Type B) | For more details please visit www.ledcon.de



Stacking

Get yourself the perfect base

With the LEDCON stacking systems for your LED-CON LED display, you can be sure that your display installations are installed professionally and robust. For some rental products we can offer you also a stacking that is fulfilling all the special requirements of our curved products.



Features

- Low transport volume
- Light
- Quick installation
- Tool-free assembly
- Undetectable parts
- Low installation depth
- Retractable feet
- 2.50 meters height without any additional outriggers
- Curved



For more details please visit www.ledcon.de!

LED display made by LEDCON

Customer-focused project management, uncompromising quality of products, as well as overall professional service entitle LEDCON systems to one of the leading producers of LED systems.

In recent years a powerful set of enterprises from development to sales has grown on the 3500 m² company site. This cooperation ensures an extraordinary flexibility thus enabling even highly customized solutions.

You plan an Out-Of-Home-Display, a Digital-Signage-Screen or an information banner at your point of sale - we manage any environment and purpose of messages via LED systems precisely shaped to your individual concepts and needs. A globally spread network of providers sets LEDCON into a position to select the best suited components for any imaginable LED display project and precisely shape according to your imaginations.

LEDCON accompanies your project from its first ideas to setting it into operation. No time-consuming coordination of scattered branches for you - one of our skilled and



experienced project managers guides you along throughout the project as your single, personal addressee.

Our support concept comprises assistance in visualisation matters, CAD based design, calculation, matters of statics, sketches of details and of course in the final installation and setting into operation.

If required we additionally support you in matters of administrative permission or composition of relevant project data.



LEDCON Systems GmbH

Jacksonring 12
D-48429 Rheine

Phone +49 (0) 5971 - 800 52 - 0
Fax +49 (0) 5971 - 800 52 - 66

www.ledcon.de
info@ledcon.de