



INDOOR LED-BANNER

Guaranteed attention



Guaranteed attention & increase in revenues

Current market research studies showed that television viewer remember your brand or your product four times more, if they have seen it on a LED banner system.

LEDCON has developed an LED banner system for the outdoor use, which is specially made for sport events which are shown on TV.

The popular LEDCON B-S-series offers a special opportunity for sponsorship marketing directly at the playground and helps the sponsor to raise returns from the introduced advertising investments.

The used SMD "3 in 1" technology enables optimal image reproduction even from different viewing angles. The high contrast ratio as well as the high frequency refresh rate also ensures perfect visibility for both – the audience and the critical playback in the camera image. Whether at daylight or floodlight – the LEDCON LED banner system guarantees excellent readability of the shown content and a flicker-free television picture.

The LEDCON LED banner system is designed for fixed installations and mobile applications.

This reliable quality management and the use of high quality components in production at LEDCON products have always been key factors.

All LEDCON banner systems are CE and EMC certified and fulfill the demands of the FIFA/UEFA/DFL regulations for any LED banner systems.



Maximum security

Highly-sensitive LED equipment close to "high-speed action" of agents and objects? - will that work in the long run?

It will! - LEDCON banner systems integrate quite a number of security features to prevent any damage from people as well as from system components, such as protection bars, soft rubber front masks and a dynamic force protection foot.

Removable bounce protection

The bounce protection is completely removable so that you can build a complete LED screen from the LED banner system

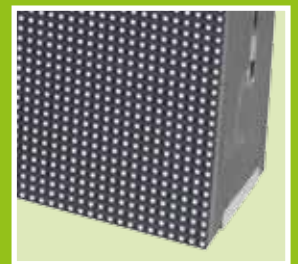


Bounce protection

The modules top as the greatest risk of injury to the player is fully equipped with a high-quality foam bounce protection.

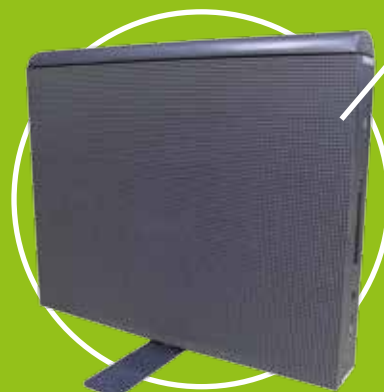
Easy handling

Using the folding strap on both sides allows each module to be moved comfortably and safely with two people.



Rotating foot

The adjustable foot can be rotated 360 degrees and can disappear quickly and easily under the banner modules for transport.



Rubberised EasySoft[®]-Shader

The LEDs are protected by a special for ball sports developed rubberized front mask against dynamic forces from outside.



Convincing equipment to the last detail

Time-saving handling

Our LED displays are specially designed to be transported and to be installed often. The lightweight aluminum housing with sturdy carrying handle, the thoughtful feet with a clever angle setting and not at least the comfortable and precise connection of the modules using spring-loaded guide pins ensure a smooth and time-saving installation of the LED banner system. The rear leveling feet are adjustable individually in 4° steps. On request, the modules are also available with a rotatable 90° foot.



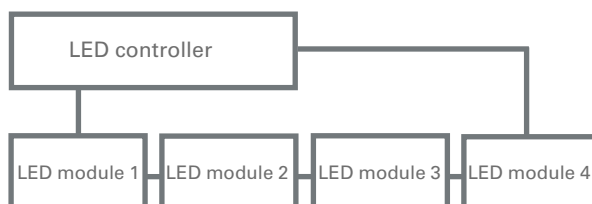
Operational Safety

By means of "ring-lined-wiring" an almost infailable distribution of player signals is reached. Each module receives its signals from two sides, automatically switching over within milliseconds in case of failure of one line. Thus a momentary breakdown of one line will pass-by unnoticed by anyone.



Plug & Play

The LEDCON LED banner system is also very smart in configuration and controlling: Addressing and configuring of each individual LED module is not necessary. The intelligent LEDCON controller automatically assigns the modules to their respective positions.



Details

	B-10SI Indoor
Optical system	
Pixel pitch	10 mm
LED type	SMD 3 in 1
Brightness	2000 cd/m ²
Display color	281 Mrd.
Module dimensions	
Measurements	960 mm x 800/960 mm x 185 mm or 1280 mm x 800/960 mm x 185 mm
Weight per module	50,00 kg
LED display	
IP rating	Front IP30
Power consumption max./m ²	300 W
Power consumption ø/m ²	150 W
Horizontal viewing angle	140°
Vertical viewing angle	140°
Refreshrate	>2500 Hz
Controlling	NOVA



Our products fulfill the UEFA requirements for LED banner systems. Here is an excerpt:



- LED configuration: LED type 3 in 1 SMD
- Height of the screen: min. 90 cm | max. 100 cm
- Total length: minimum length 246 m | ideal length 257 m
- Pixelpitch: Ideal and minimal quality area 12.5 x 12.5 mm (real)
- Viewing angle: horizontal 140° min. from all camera positions
- Refresh rate: min. 2800Hz
- Brightness: min. 5500 NIT
- Signal input: Control signal connection between two redundant entry-points:
Signal line must be configured as a ring set

LED display made by LEDCON



Customer-focused project management, uncompromising quality of products, as well as overall professional service entitle LEDCON systems to one of the leading producers of LED systems.

In recent years a powerful set of enterprises from development to sales has grown on the 3500 m² company site. This cooperation ensures an extraordinary flexibility thus enabling even highly customized solutions.

You plan an Out-Of-Home-Display, a Digital-Signage-Screen or an information banner at your point of sale - we manage any environment and purpose of messages via LED systems precisely shaped to your individual concepts and needs. A globally spread network of providers sets LEDCON into a position to select the best suited components for any imaginable LED display project and precisely shape according to your imaginations.

LEDCON accompanies your project from its first ideas to setting it into operation. No time-consuming coordination of scattered branches for you - one of our skilled and

experienced project managers guides you along throughout the project as your single, personal addressee.

Our support concept comprises assistance in visualisation matters, CAD based design, calculation, matters of statics, sketches of details and of course in the final installation and setting into operation.

If required we additionally support you in matters of administrative permission or composition of relevant project data.

